



FLORIDA COMMERCE

Summary of Employment, Demographics,
and Commuting Patterns for
Volusia County, Florida

2024

Bureau of Workforce Statistics and
Economic Research (WSER)

July 2024



Contents

Executive Summary 3

Labor Shed Analysis 4

OnTheMap, Census Bureau..... 4

Florida Department of Commerce, Bureau of Workforce Statistics and Economic Research (WSER)..... 4

Labor Inflow/Outflow Summary 5

Labor Force, Employment, and Unemployment 7

Population..... 7

Where Workers Work in Volusia County - Job Counts 8

Where Workers Work in Volusia County - Job Density..... 9

Where Workers Live in Volusia County - Job Holder Counts.....10

Where Workers Live in Volusia County - Job Holder Density11

Work and Home Area Profile Demographics Table12

Work and Home Area Profile Demographics Table (continued)13

Work Destination Summary - Neighboring County Map14

Home Destination Summary - Neighboring County Map15

Work and Home Destination Summary Table16

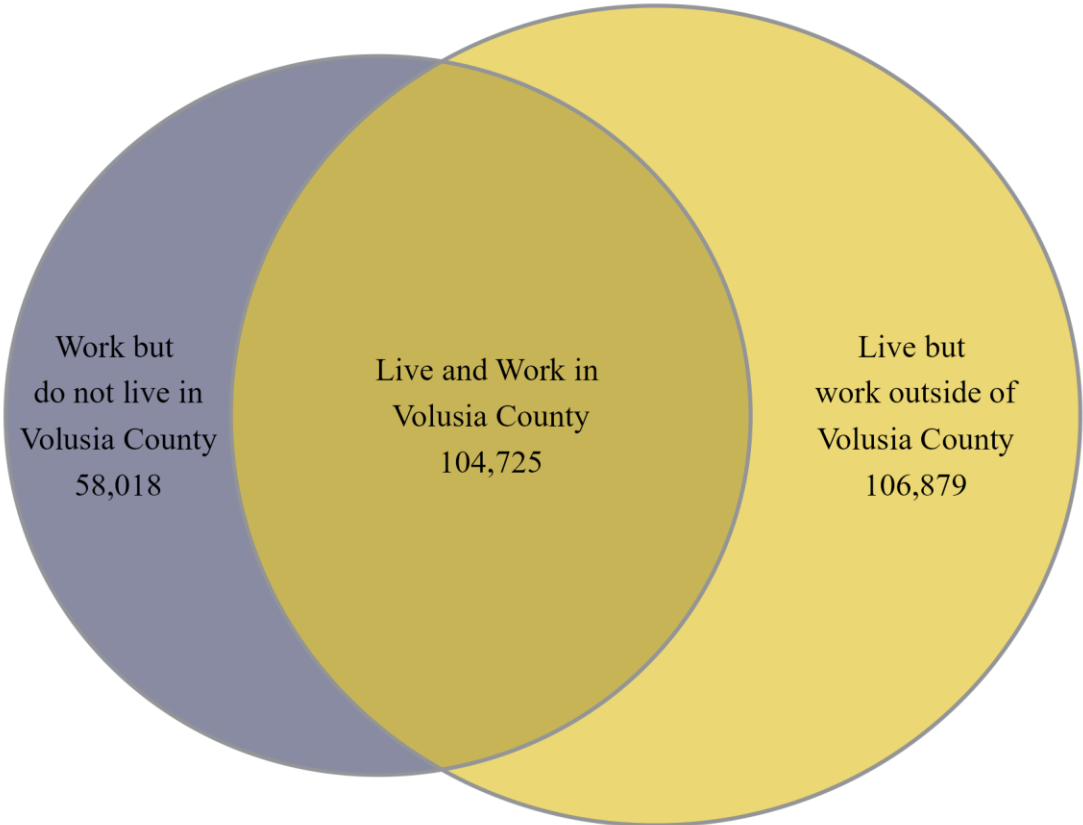
Appendix A: People QuickFacts.....17

Appendix B: Business and Geography QuickFacts19

Executive Summary

The analysis of workforce and demographic characteristics, including commuting patterns of Volusia County was conducted to provide economic data on the population and labor force living or working in the county. The report is useful for detailing where workers work and live in order to align resources. This report includes population, labor force, and demographics for Volusia County.

A detailed examination of commuting patterns for Volusia County shows that the county has a net outflow of -48,861 workers. Of the 162,743 people who are employed in Volusia County, 104,725 (64.3%) live and work in the county. There are 58,018 (35.7%) workers who live outside Volusia County and work within the county. Of the 211,604 workers who live within Volusia County, 106,879 (50.5%) residents work outside the county.



Source: U.S. Census Bureau, OnTheMap Application and Longitudinal Employer-Household Dynamics program.

With 50.5% of workers who reside in Volusia County employed outside the county, Volusia County was ranked 47 of 67 for the highest outflow rankings among Florida counties. Miami-Dade County (22.0%) had the lowest outflow rate, followed by Leon County (23.3%) and Duval County (26.4%). Glades County (84.5%), Jefferson County (83.0%), and Union County (81.8%) had the highest worker outflow rates.

Labor Shed Analysis

A labor shed analysis is defined as where workers work and where workers live relative to a user-defined selection area. This analysis helps to determine where a labor market draws its commuting workers. Labor shed studies can draw comparisons between various geographies including state, Congressional District, Metropolitan Statistical Area (MSA), county, Workforce Investment Area (WIA), Zip Code, and Census tract. By indicating how many of the selection area workers work outside the area, labor sheds can help identify potential pools of workers who would be available for work in the user-defined area.

Labor shed studies provide economic developers and existing or prospective employers a tool to understand the local labor market and make informed expansion and site selection decisions. In addition, labor shed studies can help indicate potential impacts from environmental, social, or economic incidents.

Based on 2021 LEHD Origin-Destination Employment Statistics (LODES) data from the U.S. Census Bureau.

OnTheMap, Census Bureau

OnTheMap is a mapping and reporting tool developed by the U.S. Census Bureau showing employment and home locations of workers with companion reports for user-defined areas. It is the first synthetic data product released by the Census Bureau. OnTheMap is an important tool for Florida to perform labor inflow/outflow analyses and provide commuting data to planning and economic development agencies as well as Regional Workforce Boards. OnTheMap data is also used by the Florida Department of Commerce to help quantify natural disaster impacts for emergency management agencies based on where workers live and where they work.

OnTheMap integrates existing data from state-supplied administrative records on workers and employers with existing federal censuses, surveys, and other administrative records. The state Labor Market Information (LMI) agencies supply key data from unemployment wage records and from businesses each quarter. The Census Bureau merges the state-supplied data with current demographic information to produce the data found in OnTheMap. By combining data from different administrative sources, censuses, and surveys, the Census Bureau produces local employment information that was not previously available.

Florida Department of Commerce, Bureau of Workforce Statistics and Economic Research (WSER)

The Florida Department of Commerce, Bureau of Workforce Statistics and Economic Research (WSER), produces, analyzes, and distributes labor statistics to improve economic decision making. These data are produced as part of the federal/state cooperative statistical program with the U.S. Department of Labor, Bureau of Labor Statistics, and the Employment and Training Administration.

Labor Inflow/Outflow Summary

	Count	Share
Volusia County Labor Market Size (Primary Jobs)		
Employed in the Selection Area	162,743	100.0%
Living in the Selection Area	211,604	130.0%
Net Job Inflow (+) or Outflow (-)	-48,861	-
Volusia County Labor Force Efficiency (Primary Jobs)		
Living in the Selection Area	211,604	100.0%
Living and Employed in the Selection Area	104,725	49.5%
Living in the Selection Area but Employed Outside	106,879	50.5%
Volusia County Employment Efficiency (Primary Jobs)		
Employed in the Selection Area	162,743	100.0%
Employed and Living in the Selection Area	104,725	64.3%
Employed in the Selection Area but Living Outside	58,018	35.7%
Outflow Job Characteristics		
External Jobs Filled by Residents	106,879	100.0%
Workers Aged 29 or younger	23,963	22.4%
Workers Aged 30 to 54	54,808	51.3%
Workers Aged 55 or older	28,108	26.3%
Workers Earning \$1,250 per month or less	17,642	16.5%
Workers Earning \$1,251 to \$3,333 per month	37,812	35.4%
Workers Earning More than \$3,333 per month	51,425	48.1%
Workers in the "Goods Producing" Industry Class	15,354	14.4%
Workers in the "Trade, Transportation, and Utilities" Industry Class	28,435	26.6%
Workers in the "All Other Services" Industry Class	63,090	59.0%

Source: U.S. Census Bureau, OnTheMap Application and Longitudinal Employer-Household Dynamics program.

Labor Inflow/Outflow Summary (continued)

	Count	Share
Inflow Job Characteristics (Primary Jobs)		
Internal Jobs Filled by Outside Workers	58,018	100.0%
Workers Aged 29 or younger	14,796	25.5%
Workers Aged 30 to 54	28,728	49.5%
Workers Aged 55 or older	14,494	25.0%
Workers Earning \$1,250 per month or less	11,696	20.2%
Workers Earning \$1,251 to \$3,333 per month	21,934	37.8%
Workers Earning More than \$3,333 per month	24,388	42.0%
Workers in the "Goods Producing" Industry Class	7,911	13.6%
Workers in the "Trade, Transportation, and Utilities" Industry Class	17,812	30.7%
Workers in the "All Other Services" Industry Class	32,295	55.7%
Interior Flow Job Characteristics (Primary Jobs)		
Internal Jobs Filled by Residents	104,725	100.0%
Workers Aged 29 or younger	21,256	20.3%
Workers Aged 30 to 54	51,757	49.4%
Workers Aged 55 or older	31,712	30.3%
Workers Earning \$1,250 per month or less	18,812	18.0%
Workers Earning \$1,251 to \$3,333 per month	41,266	39.4%
Workers Earning More than \$3,333 per month	44,647	42.6%
Workers in the "Goods Producing" Industry Class	16,120	15.4%
Workers in the "Trade, Transportation, and Utilities" Industry Class	15,127	14.4%
Workers in the "All Other Services" Industry Class	73,478	70.2%

Source: U.S. Census Bureau, OnTheMap Application and Longitudinal Employer-Household Dynamics program.

The above Labor Inflow/Outflow Summary presents characteristics of jobs, categorized by inflow (internal jobs filled by outside workers), outflow (external jobs filled by residents), and interior flow (internal jobs filled by residents).

Labor Force, Employment, and Unemployment

	February 2024				February 2023			
	LABOR	EMPLOY-	UNEMPLOYMENT		LABOR	EMPLOY-	UNEMPLOYMENT	
	FORCE	MENT	LEVEL	RATE (%)	FORCE	MENT	LEVEL	RATE (%)
Workforce Region 27	632,030	609,905	22,125	3.5	619,019	600,731	18,288	3.0
Brevard County	307,034	296,791	10,243	3.3	300,534	292,205	8,329	2.8
Flagler County	51,864	49,742	2,122	4.1	50,773	49,016	1,757	3.5
Volusia County	273,132	263,372	9,760	3.6	267,712	259,510	8,202	3.1
Florida	11,079,000	10,731,000	348,000	3.1	10,857,000	10,563,000	294,000	2.7
United States	167,285,000	160,315,000	6,970,000	4.2	166,178,000	159,713,000	6,465,000	3.9

Source: U.S. Department of Labor, Bureau of Labor Statistics, Local Area Unemployment Statistics.

Volusia County employment was at 263,372 in February of 2024. This represents an over the year change of 3,862. In February of 2024, Volusia County’s unemployment rate was 3.6%, which reflects an over the year change of 0.5 percentage point.

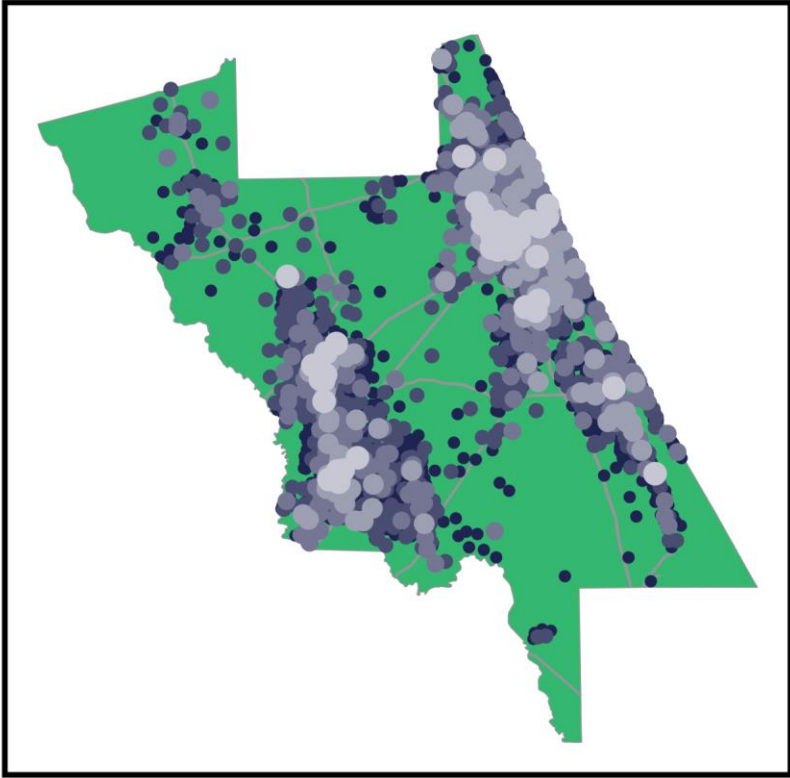
Population

	Population Estimate (as of July 1)							
	2016	2017	2018	2019	2020	2021	2022	2023
Workforce Region 27	1,212,733	1,235,636	1,253,389	1,270,307	1,280,579	1,305,242	1,337,130	1,365,775
Brevard County	576,874	587,769	595,203	601,942	608,775	617,900	630,707	643,979
Flagler County	107,406	109,999	112,085	115,081	116,028	120,974	126,758	131,439
Volusia County	528,453	537,868	546,101	553,284	555,776	566,368	579,665	590,357
Florida	20,613,477	20,963,613	21,244,317	21,477,737	21,591,299	21,830,708	22,245,521	22,610,726
United States	322,941,311	324,985,539	326,687,501	328,239,523	331,526,933	332,048,977	333,271,411	334,914,895

Source: U.S. Census Bureau, Population Division.

Volusia County's population was estimated at 590,357 in 2023. This represents an over the year change of 10,692. By population, Volusia County represents 43% of Workforce Region 27.

Where Workers Work in Volusia County - Job Counts



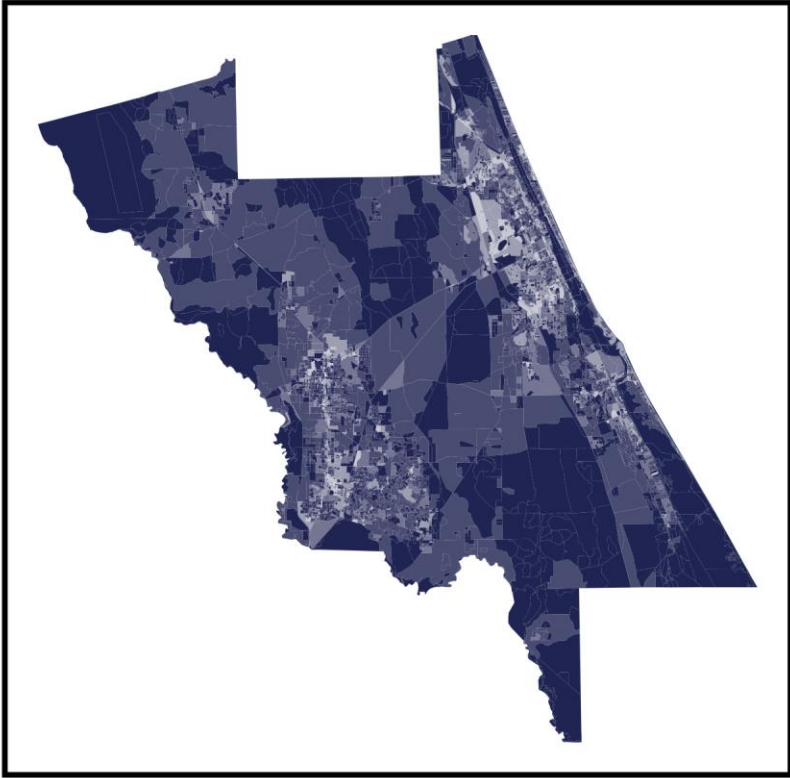
Job Count [Jobs per Census Block]

- 1 - 7
- 8 - 35
- 36 - 166
- 167 - 569
- 570 - 7,263

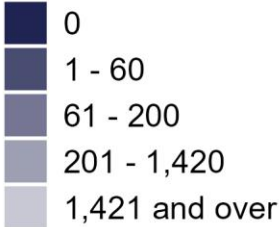
Source: U.S. Census Bureau, OnTheMap Application and Longitudinal Employer-Household Dynamics program.

The count of Jobs per Census Block above shows the number of jobs in each census block within Volusia County.

Where Workers Work in Volusia County - Job Density



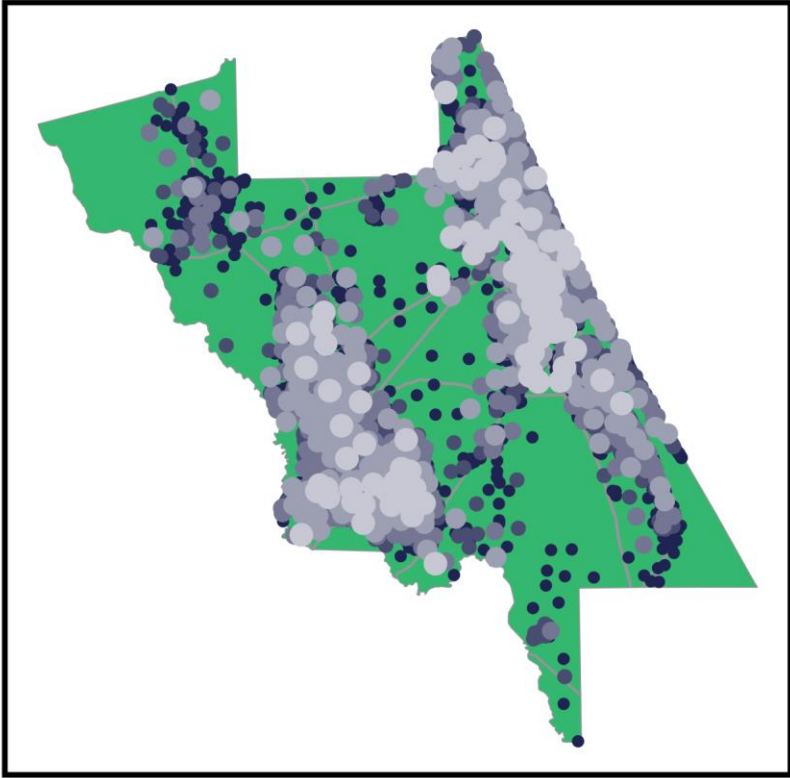
Job Density [Jobs per Sq. Mile]



Source: U.S. Census Bureau, OnTheMap Application and Longitudinal Employer-Household Dynamics program.

The above Job Density map displays the number of jobs in each census block, normalized as a density of jobs per square mile.

Where Workers Live in Volusia County - Job Holder Counts



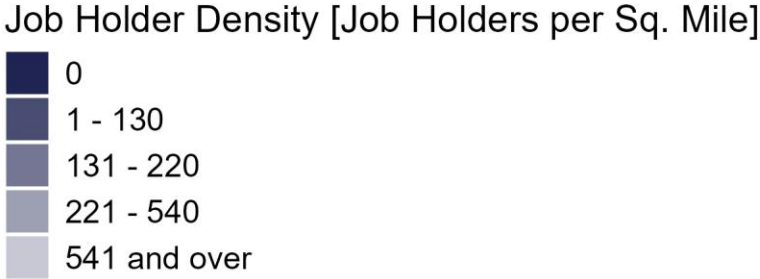
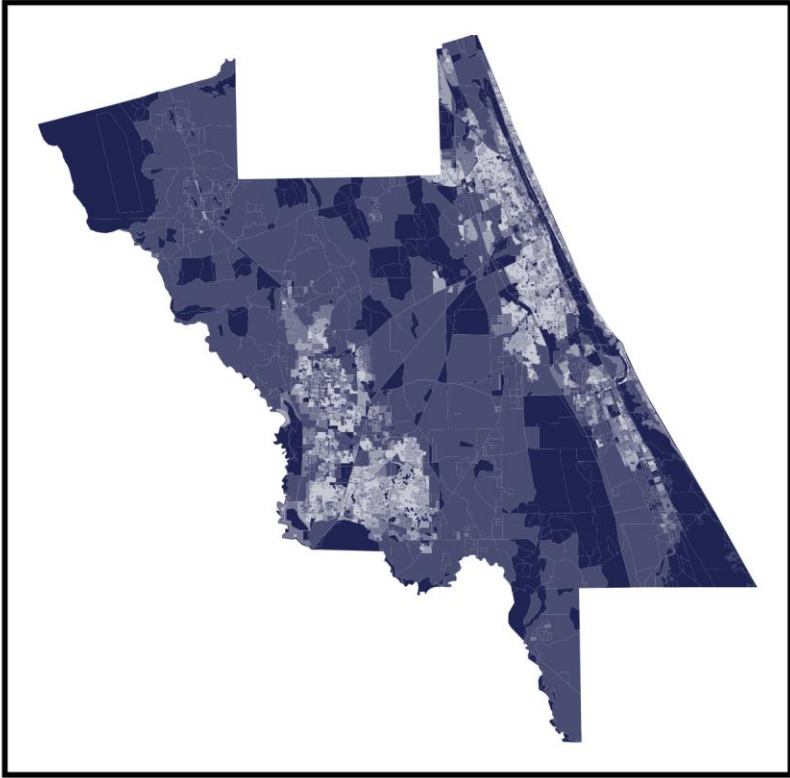
Job Holder Count [Job Holders per Census Block]

- 1 - 13
- 14 - 28
- 29 - 67
- 68 - 191
- 192 - 1,100

Source: U.S. Census Bureau, OnTheMap Application and Longitudinal Employer-Household Dynamics program.

The count of Job Holders per Census Block above shows the number of workers living in each census block within Volusia County.

Where Workers Live in Volusia County - Job Holder Density



Source: U.S. Census Bureau, OnTheMap Application and Longitudinal Employer-Household Dynamics program.

The above Job Holder Density map displays the number of workers living in each census block, normalized as a density of home locations per square mile.

Work and Home Area Profile Demographics Table

The below Work and Home Area Profile Demographics Table displays the demographic composition of the worker population that work in Volusia County on the left and the composition of the worker population that lives in Volusia County on the right. Workers employed in Volusia County are clustered in the Health Care and Social Assistance (18.1%), and Retail Trade (14.8%) industries. Workers living in Volusia County are concentrated in the Health Care and Social Assistance (14.9%), and Retail Trade (13.3%) industries.

	Workers Employed in Volusia County		Workers Living in Volusia County	
	Count	Share	Count	Share
Total Primary Jobs	162,743	100.0%	211,604	100.0%
Jobs by NAICS Industry Sector				
Agriculture, Forestry, Fishing and Hunting	1,250	0.8%	1,522	0.7%
Mining, Quarrying, and Oil and Gas Extraction	13	0.0%	35	0.0%
Utilities	584	0.4%	781	0.4%
Construction	12,435	7.6%	17,875	8.4%
Manufacturing	10,333	6.3%	12,042	5.7%
Wholesale Trade	4,700	2.9%	7,368	3.5%
Retail Trade	24,156	14.8%	28,115	13.3%
Transportation and Warehousing	3,499	2.2%	7,298	3.4%
Information	1,129	0.7%	2,814	1.3%
Finance and Insurance	4,609	2.8%	8,883	4.2%
Real Estate and Rental and Leasing	3,154	1.9%	4,279	2.0%
Professional, Scientific, and Technical Services	8,007	4.9%	13,292	6.3%
Management of Companies and Enterprises	1,215	0.7%	2,496	1.2%
Administration & Support, Waste Management and Remediation	8,973	5.5%	15,232	7.2%
Educational Services	13,019	8.0%	14,409	6.8%
Health Care and Social Assistance	29,438	18.1%	31,491	14.9%
Arts, Entertainment, and Recreation	3,293	2.0%	4,266	2.0%
Accommodation and Food Services	19,531	12.0%	22,515	10.6%
Other Services (excluding Public Administration)	5,168	3.2%	6,623	3.1%
Public Administration	8,237	5.1%	10,268	4.9%

Source: U.S. Census Bureau, OnTheMap Application and Longitudinal Employer-Household Dynamics program.

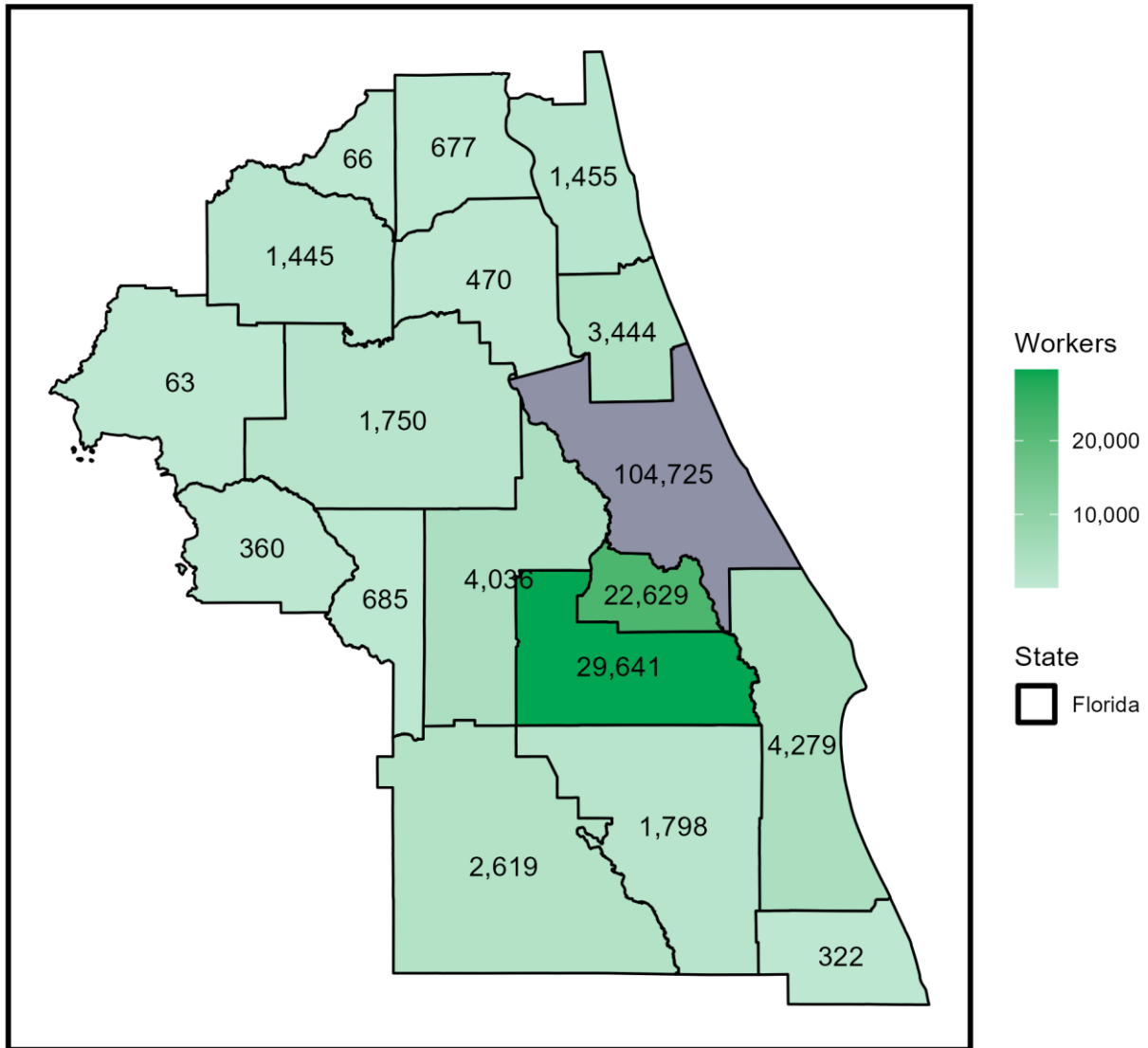
Work and Home Area Profile Demographics Table (continued)

	Workers Employed in Volusia County		Workers Living in Volusia County	
	Count	Share	Count	Share
Jobs by Worker Age				
Age 29 or younger	36,052	22.2%	45,219	21.4%
Age 30 to 54	80,485	49.5%	106,565	50.4%
Age 55 or older	46,206	28.4%	59,820	28.3%
Jobs by Worker Sex				
Male	79,537	48.9%	105,582	49.9%
Female	83,206	51.1%	106,022	50.1%
Jobs by Worker Race				
White Alone	134,197	82.5%	176,914	83.6%
Black or African American Alone	20,550	12.6%	24,959	11.8%
American Indian or Alaska Native Alone	693	0.4%	990	0.5%
Asian Alone	4,443	2.7%	4,859	2.3%
Native Hawaiian or Other Pacific Islander Alone	167	0.1%	236	0.1%
Two or More Race Groups	2,693	1.7%	3,646	1.7%
Jobs by Worker Ethnicity				
Not Hispanic or Latino	140,632	86.4%	179,440	84.8%
Hispanic or Latino	22,111	13.6%	32,164	15.2%
Jobs by Worker Educational Attainment				
Less than high school	18,204	11.2%	23,928	11.3%
High school or equivalent, no college	36,358	22.3%	46,653	22.0%
Some college or Associate degree	41,695	25.6%	54,055	25.5%
Bachelor's degree or advanced degree	30,434	18.7%	41,749	19.7%
Educational attainment not available (workers aged 29 or younger)	36,052	22.2%	45,219	21.4%
Jobs by Earnings				
\$1,250 per month or less	30,508	18.7%	36,454	17.2%
\$1,251 to \$3,333 per month	63,200	38.8%	79,078	37.4%
More than \$3,333 per month	69,035	42.4%	96,072	45.4%

Source: U.S. Census Bureau, OnTheMap Application and Longitudinal Employer-Household Dynamics program.

Work Destination Summary - Neighboring County Map

The map below shows the neighboring counties where workers, who live in Volusia County, are employed.

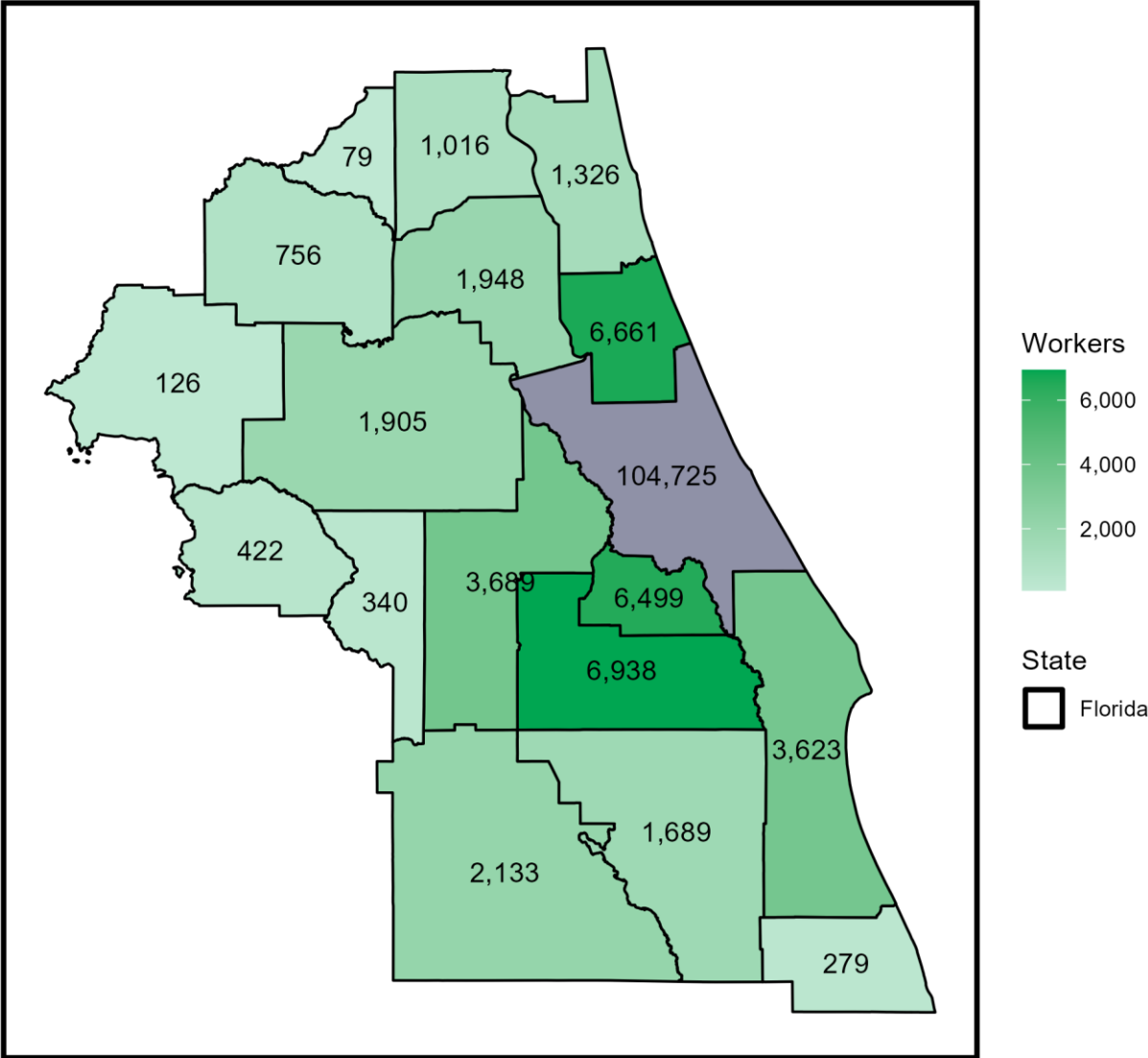


Note: The target county (in grey blue) shows people that live in and work in Volusia County.

Source: U.S. Census Bureau, OnTheMap Application and Longitudinal Employer-Household Dynamics program.

Home Destination Summary - Neighboring County Map

The map below shows the neighboring counties where workers, who are employed in Volusia County, live.



Note: The target county (in grey blue) shows people that live in and work in Volusia County.

Source: U.S. Census Bureau, OnTheMap Application and Longitudinal Employer-Household Dynamics program.

Work and Home Destination Summary Table

Of the 106,879 Volusia County workers employed outside of the county, the top destination counties are Orange County, FL (29,641 workers); Seminole County, FL (22,629 workers); Duval County, FL (6,773 workers). Of the 58,018 Volusia County workers living outside of the county, the top origin counties are Orange County, FL (6,938 workers); Flagler County, FL (6,661 workers); Seminole County, FL (6,499 workers).

	Workers Employed in Volusia County		Workers Living in Volusia County	
	Count	Share	Count	Share
Total Primary Jobs	162,743	100.0%	211,604	100.0%
Primary Job Counts by Counties				
Volusia County, FL	104,725	64.3%	104,725	49.5%
Orange County, FL	6,938	4.3%	29,641	14.0%
Flagler County, FL	6,661	4.1%	3,444	1.6%
Seminole County, FL	6,499	4.0%	22,629	10.7%
Duval County, FL	3,779	2.3%	6,773	3.2%
Lake County, FL	3,689	2.3%	4,036	1.9%
Brevard County, FL	3,623	2.2%	4,279	2.0%
Hillsborough County, FL	2,190	1.3%	5,229	2.5%
Polk County, FL	2,133	1.3%	2,619	1.2%
Putnam County, FL	1,948	1.2%	470	0.2%
Marion County, FL	1,905	1.2%	1,750	0.8%
Osceola County, FL	1,689	1.0%	1,798	0.8%
Pinellas County, FL	1,354	0.8%	2,379	1.1%
St. Johns County, FL	1,326	0.8%	1,455	0.7%
Palm Beach County, FL	1,203	0.7%	2,190	1.0%
Pasco County, FL	1,097	0.7%	980	0.5%
Clay County, FL	1,016	0.6%	677	0.3%
Lee County, FL	773	0.5%	844	0.4%
Broward County, FL	766	0.5%	2,127	1.0%
Alachua County, FL	756	0.5%	1,445	0.7%
St. Lucie County, FL	601	0.4%	539	0.3%
Miami-Dade County, FL	546	0.3%	1,574	0.7%
Sarasota County, FL	509	0.3%	684	0.3%
Manatee County, FL	505	0.3%	574	0.3%
Citrus County, FL	422	0.3%	360	0.2%
All Other Locations	6,090	3.7%	8,383	4.0%

Source: U.S. Census Bureau, OnTheMap Application and Longitudinal Employer-Household Dynamics program.

Appendix A: People QuickFacts

	Volusia County	Florida	United States
Population			
Population estimates, July 1, 2023, (V2023)	590,357	22,610,726	334,914,895
Population estimates base, April 1, 2020, (V2023)	553,537	21,538,216	331,464,948
Population, percent change - April 1, 2020 (estimates base) to July 1, 2023, (V2023)	6.7%	5.0%	1.0%
Population, Census, April 1, 2020	553,543	21,538,187	331,449,281
Population, Census, April 1, 2010	494,593	18,801,310	308,745,538
Age and Sex			
Persons under 5 years, percent	4.4%	5.0%	5.6%
Persons under 18 years, percent	17.3%	19.3%	21.7%
Persons 65 years and over, percent	25.5%	21.6%	17.3%
Female persons, percent	51.0%	50.8%	50.4%
Race and Hispanic Origin			
White alone, percent	82.9%	76.8%	75.5%
Black or African American alone, percent(a)	11.9%	17.0%	13.6%
American Indian and Alaska Native alone, percent(a)	0.5%	0.5%	1.3%
Asian alone, percent(a)	2.0%	3.1%	6.3%
Native Hawaiian and Other Pacific Islander alone, percent(a)	0.1%	0.1%	0.3%
Two or More Races, percent	2.5%	2.4%	3.0%
Hispanic or Latino, percent(b)	16.7%	27.1%	19.1%
White alone, not Hispanic or Latino, percent	68.5%	52.3%	58.9%
Population Characteristics			
Veterans, 2018-2022	47,822	1,369,719	17,038,807
Foreign born persons, percent, 2018-2022	8.3%	21.1%	13.7%
Housing			
Housing units, July 1, 2022, (V2022)	282,208	10,257,426	143,786,655
Owner-occupied housing unit rate, 2018-2022	72.1%	66.9%	64.8%
Median value of owner-occupied housing units, 2018-2022	\$251,400	\$292,200	\$281,900
Median selected monthly owner costs -with a mortgage, 2018-2022	\$1,503	\$1,752	\$1,828
Median selected monthly owner costs -without a mortgage, 2018-2022	\$548	\$590	\$584
Median gross rent, 2018-2022	\$1,271	\$1,444	\$1,268
Building permits, 2022	5,298	211,962	1,665,088

Legend

The vintage year (e.g., V2016) refers to the final year of the series (2010 thru 2016). Different vintage years of estimates are not comparable.

Fact Notes

- (a) Includes persons reporting only one race
- (b) Hispanics may be of any race, so also are included in applicable race categories
- (c) Economic Census - Puerto Rico data are not comparable to U.S. Economic Census data

Value Flags

- "-" No or too few sample observations were available to compute an estimate.
- "D" Suppressed to avoid disclosure of confidential information
- "F" Fewer than 25 firms
- "NA" Not available
- "S" Suppressed; does not meet publication standards
- "Z" Value greater than zero but less than half unit of measure shown

Source: U.S. Census Bureau, State & County QuickFacts.

People QuickFacts (continued)

	Volusia County	Florida	United States
Families & Living Arrangements			
Households, 2018-2022	232,673	8,353,441	125,736,353
Persons per household, 2018-2022	2.34	2.53	2.57
Living in same house 1 year ago, percent of persons age 1 year+, 2018-2022	87.4%	85.6%	86.9%
Language other than English spoken at home, percent of persons age 5 years+, 2018-2022	15.0%	29.9%	21.7%
Computer and Internet Use			
Households with a computer, percent, 2018-2022	94.9%	95.2%	94.0%
Households with a broadband Internet subscription, percent, 2018-2022	87.5%	88.8%	88.3%
Education			
High school graduate or higher, percent of persons age 25 years+, 2018-2022	91.6%	89.3%	89.1%
Bachelor's degree or higher, percent of persons age 25 years+, 2018-2022	26.2%	32.3%	34.3%
Health			
With a disability, under age 65 years, percent, 2018-2022	11.6%	8.7%	8.9%
Persons without health insurance, under age 65 years, percent	15.9%	13.9%	9.3%
Economy			
In civilian labor force, total, percent of population age 16 years+, 2018-2022	54.0%	59.0%	63.0%
In civilian labor force, female, percent of population age 16 years+, 2018-2022	50.4%	54.6%	58.5%
Total accommodation and food services sales, 2017 (\$1,000)(c)	1,293,257	67,950,386	938,237,077
Total health care and social assistance receipts/revenue, 2017 (\$1,000)(c)	3,465,810	155,283,578	2,527,903,275
Total transportation and warehousing receipts/revenue, 2017 (\$1,000)(c)	398,741	68,145,959	895,225,411
Total retail sales, 2017 (\$1,000)(c)	7,739,644	333,134,553	4,949,601,481
Total retail sales per capita, 2017(c)	\$14,366	\$15,881	\$15,224
Transportation			
Mean travel time to work (minutes), workers age 16 years+, 2018-2022	26.6	27.9	26.7
Income & Poverty			
Median household income (in 2022 dollars), 2018-2022	\$63,075	\$67,917	\$75,149
Per capita income in past 12 months (in 2022 dollars), 2018-2022	\$35,364	\$38,850	\$41,261
Persons in poverty, percent	11.8%	12.7%	11.5%

Legend

The vintage year (e.g., V2016) refers to the final year of the series (2010 thru 2016). Different vintage years of estimates are not comparable.

Fact Notes

- (a) Includes persons reporting only one race
- (b) Hispanics may be of any race, so also are included in applicable race categories
- (c) Economic Census - Puerto Rico data are not comparable to U.S. Economic Census data

Value Flags

- "-" No or too few sample observations were available to compute an estimate.
- "D" Suppressed to avoid disclosure of confidential information
- "F" Fewer than 25 firms
- "NA" Not available
- "S" Suppressed; does not meet publication standards
- "Z" Value greater than zero but less than half unit of measure shown

Source: U.S. Census Bureau, State & County QuickFacts.

Appendix B: Business and Geography QuickFacts

	Volusia County	Florida	United States
Businesses			
Total employer establishments, 2021	13,872	616,961	8,148,606
Total employment, 2021	157,062	8,877,389	128,346,299
Total annual payroll, 2021 (\$1,000)	6,875,434	492,355,693	8,278,573,947
Total employment, percent change, 2020-2021	-1.2%	-2.3%	-4.3%
Total nonemployer establishments, 2021	51,937	2,770,424	28,477,518
All employer firms, Reference year 2017	10,372	438,491	5,744,643
Men-owned employer firms, Reference year 2017	5,975	261,671	3,480,438
Women-owned employer firms, Reference year 2017	1,932	93,163	1,134,549
Minority-owned employer firms, Reference year 2017	1,259	102,627	1,014,958
Nonminority-owned employer firms, Reference year 2017	8,129	309,451	4,371,152
Veteran-owned employer firms, Reference year 2017	665	28,391	351,237
Nonveteran-owned employer firms, Reference year 2017	8,589	382,527	4,968,606
Geography			
Population per square mile, 2020	502.6	401.4	93.8
Land area in square miles, 2020	1,101.31	53,652.17	3,533,038.28
FIPS Code	12127	12	1

Source: U.S. Census Bureau, State & County QuickFacts.

**FloridaCommerce
Bureau of Workforce Statistics and Economic Research**

**Caldwell Building
MSC G-020
107 E. Madison Street
Tallahassee, Florida 32399-4111
Phone (850) 245-7205**



FloridaJobs.org/wser-home
WSER.Info@Commerce.fl.gov